

Color Control GX

www.victronenergy.com



Color Control GX

The Color Control provides intuitive control and monitoring for all products connected to it. The list of Victron products that can be connected is endless: Inverters, Multi's, Quattro's, MPPT 150/70, BMV-600, Skylla-i, Lynx Ion and even more.

VRM Online Portal

Besides monitoring and controlling products on the Color Control GX, the information is also forwarded to our free remote monitoring website: the VRM Online Portal. To get an impression of the VRM Online Portal, visit <https://vrn.victronenergy.com/>, and use the 'Take a look inside' button. The portal is free of charge. See also the kWh dashboard screenshot further down in this datasheet.

Future functionality

The Color Control has endless possibilities. To implement all our ideas and wishes would take years. There are therefore many features that are not yet available. Functions marked with 'Future function' will become available later on, as a firmware update. Firmware updates are free of charge, as with all Victron products. Updating the product is easy: the Color Control GX will update itself automatically, as long as it is connected to the internet. Manual updates can be done via an SD Card.

Supported Products

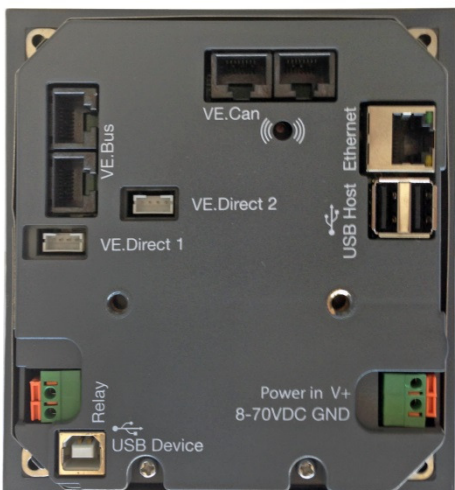
- Multi's, including split-phase and three phase systems. Monitoring and control (on/off and current limiter). Changing the configuration is not yet available.
- Quattro's, including split-phase and three phase systems. Same limitations as Multi's, and some Quattro specific features, such as seeing which input is currently active, are not yet available.
- BlueSolar MPPT 150/70. Current solar output is visible on the overview screen, and all parameters are logged to the VRM online portal. Note that the VRM App has a nice overview showing data of the BlueSolar MPPT 150/70 as well. MPPT 150/70 details are not yet available in the menus.
- BMV-600 and BMV-700, connected via VE.Can and a BMV to NMEA-2000 interface. BMV values are visible on the overview page, and they are logged to the VRM online portal. BMV details are not yet available in the menus. Note that later in 2013-Q3 it will be possible to connect a BMV-600 directly to the VE.Direct ports.

Other highlights

- When connected to the internet, the Color Control GX will update itself automatically as if there is a new software version available. It checks for an update every night at 02:00 UTC.
- Multiple languages: English, Chinese, German, Italian, Spanish, French, Swedish and Dutch.

Notes for existing VGR2 and VER users

- Opposite to the VGR2 and VER, the Color Control GX stores all data locally during network interruptions. As soon as the connection to the VRM Online Portal is restored, it will automatically send all backlogged data to the portal, where the data can be analyzed as usual. This can be useful for diagnostics and problem solving as well: leave it for a couple of days in an installation where there are problems, then take it back to the office and connect it to the internet.
- Remote VEConfigure is not yet supported by the Color Control GX. This functionality is expected in 2013 Q4, and it will include support for changing Assistants and their settings, which is not possible with the VGR2 and VER.
- The local website, as present on the Victron Ethernet Remote, is not yet supported.

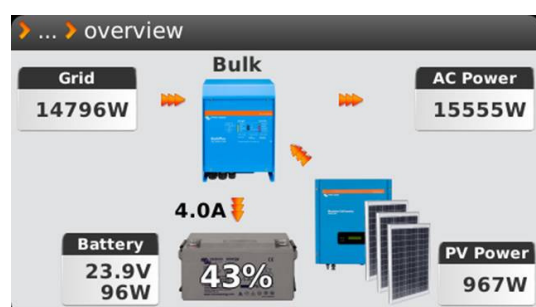


Color Control GX

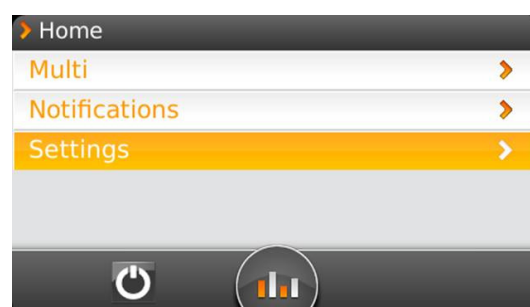
www.victronenergy.com

Color Control GX			
Power supply voltage range	9 – 70V DC		
Current draw	12V DC	24V DC	48V DC
Switched off	0mA	0mA	0mA
Display off	140mA	tbm	tbm
Display at minimum intensity	160mA	tbm	tbm
Display at maximum intensity	245mA	tbm	tbm
Potential free contact	3A / 30V DC / 250V AC (Normally open)		
	Data communication		
VE.Direct	2 separate VE.Direct ports		
VE.Can	2 paralleled RJ45 sockets		
VE.Bus	2 paralleled RJ45 sockets		
USB	2 USB Host ports		
Ethernet	10/100/1000MB RJ45 socket		
	Other		
Outer dimensions (h x w x d)			
Operating temperature range	-20 to +50°C		

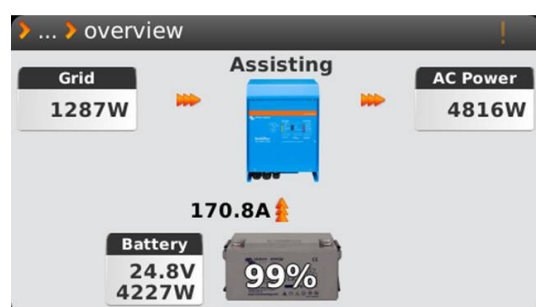
Overview - Multi with PV Inverter on output (Hub-2)



Main menu



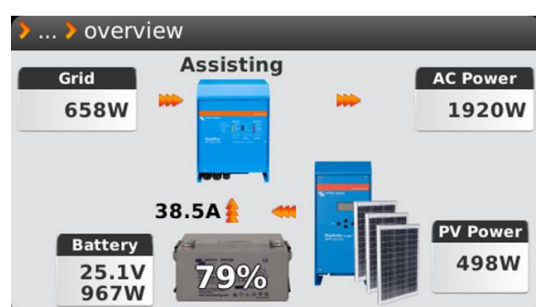
Overview - Multi



Alarm notifications



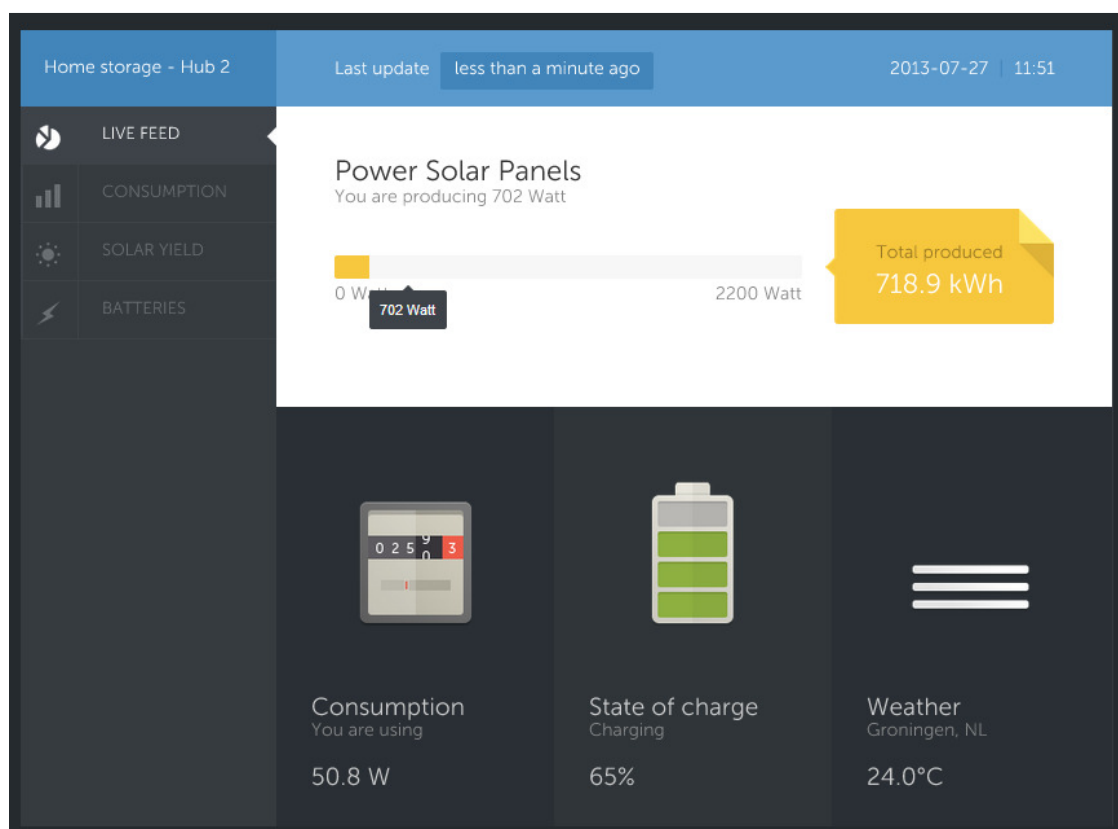
Overview - Multi with MPPT 150/70



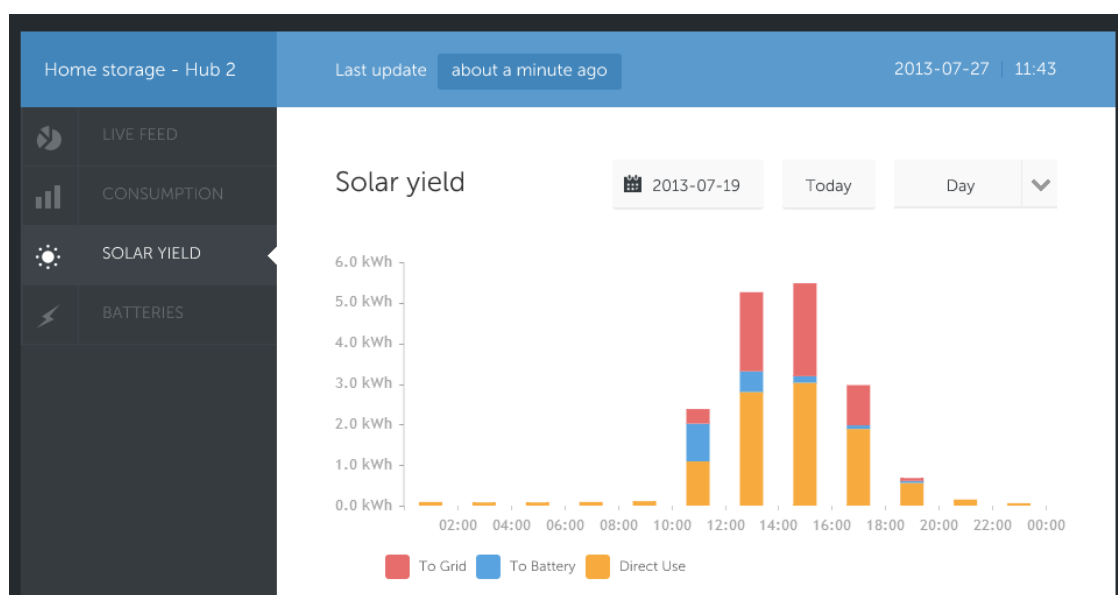
Color Control GX

www.victronenergy.com

VRM Dashboard – Live feed



VRM Dashboard – Distribution of Solar Yield



Color Control GX

www.victronenergy.com

Color Control GX schematic diagram

